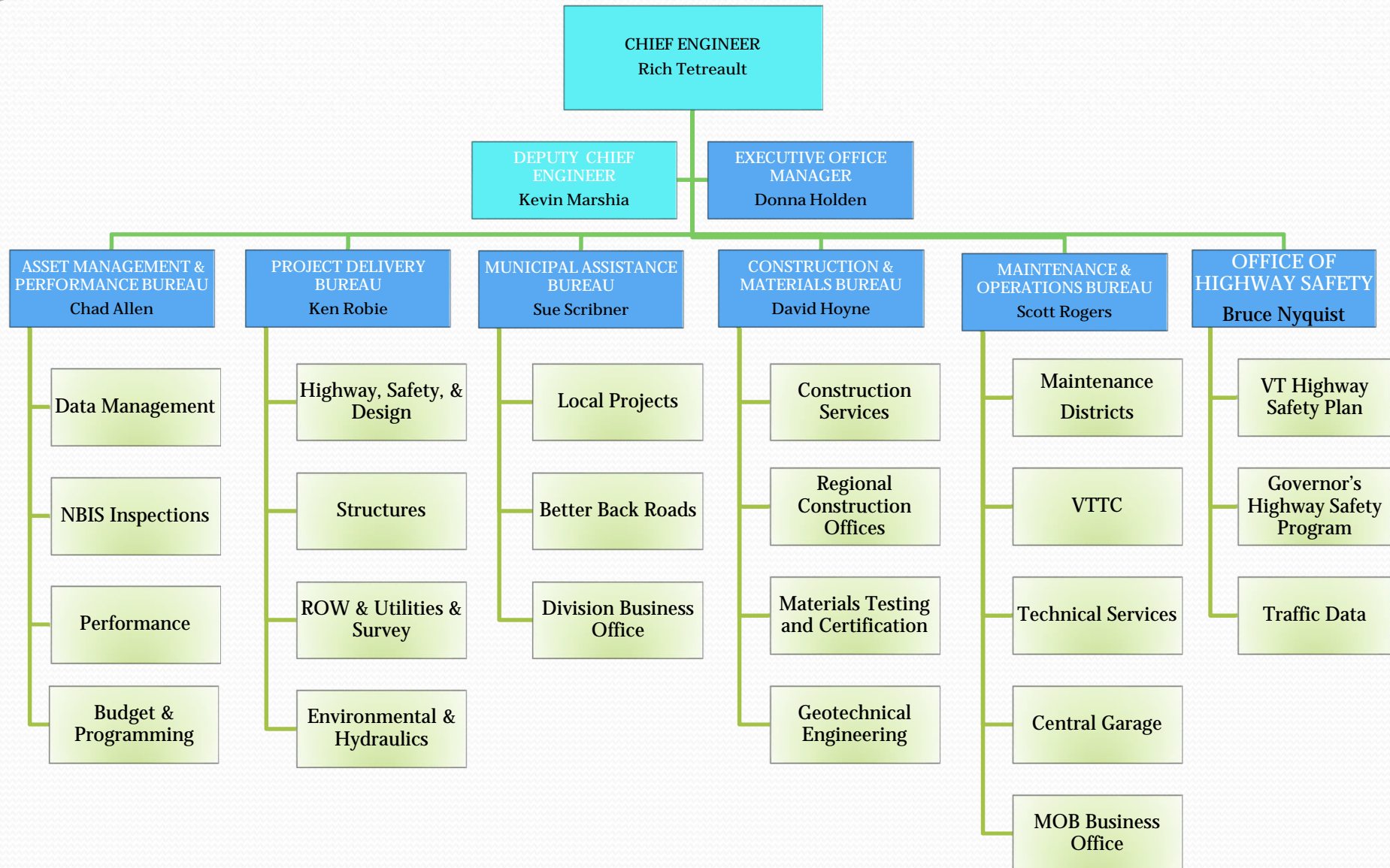


Municipal Assistance Bureau Highway Division

Susan E. Scribner
Director

Highway Division

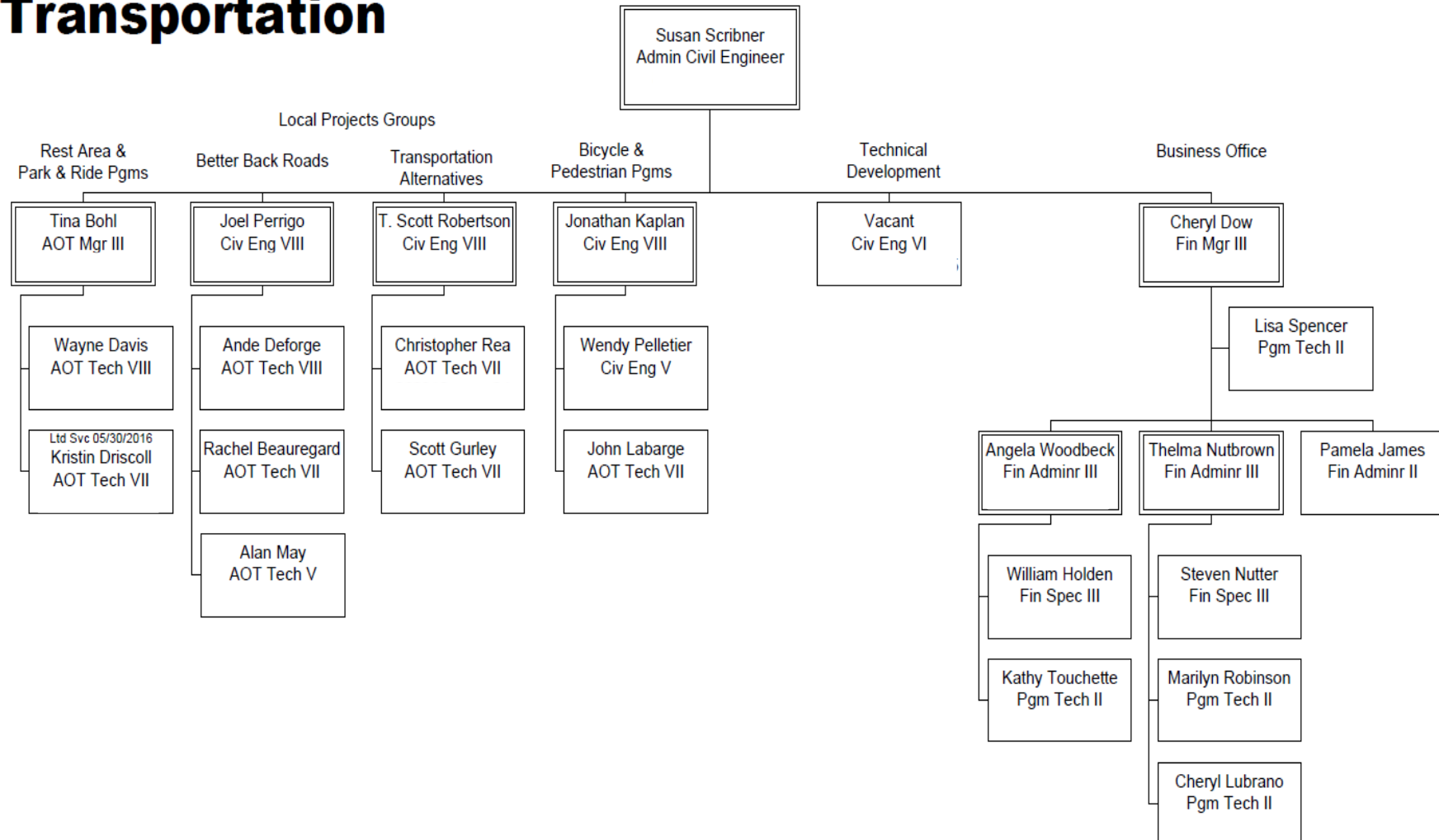




Agency of Transportation

Highway Division

Municipal Assistance Bureau





Local Projects Section

Assist communities with developing federal aid and state projects and providing technical assistance for:

- Better Backroads Program
- Bicycle and Pedestrian Program
- Transportation Alternatives Program
- Municipal Park and Ride Program
- Projects within Roadway, Safety and Traffic Operations, Town Highway Bridge and State Highway Bridge Programs
- Municipal Mitigation and Multi- Modal Programs

Also develop projects for:

- Park and Ride Program
- Rest Area Program



Division Business Office

Processing of consultant and contractor payments as well as grant payments

- \$172,942,294 in construction related payments 2014
- \$17,506,554 in grant related payments 2014
- \$16,033,890 in consultant/ retainer related payments 2014

Division administrative budget – both developing and monitoring

General support to division for financial and contract related items

Assistance to other divisions as requested



Better Backroads

Support projects on roads that improve water quality and result in maintenance cost savings.

Goal is to promote the use of erosion control and maintenance techniques that save money while protecting and enhancing Vermont's lakes and streams. Assist communities through technical assistance and grant opportunities.

Two types of grants:

- Category A – Road Erosion Inventory and Capital Budget Planning
- Category B – Correction of a Road Related Erosion Problem
 - Example projects: rock lined ditches, stabilized banks, culvert headers, road drainage, turnouts, “Daylighted” culverts, Velocity reducers, Diversion berms, Energy dissipaters and stream bank stabilization

Arlington



Example of Before and After



Glover



And More Before and After





Bicycle and Pedestrian Program

Goal is to improve access and safety for bicyclists and/or pedestrians through the planning, design and construction of infrastructure projects. Technical assistance and grant opportunities.

Types of projects funded:

- Bicycle lanes (on-road facility delineated with pavement markings and signs)
- Shoulders (generally a minimum of 3-feet wide to accommodate bicyclists)
- Sidewalks
- Pedestrian crossing improvements, including median pedestrian refuge islands
- Pedestrian signals
- Improvements that address requirements of the Americans with Disabilities Act
- Shared-use paths (designed for use by both bicyclists and pedestrians)
- Pedestrian-scale lighting (not likely to rank highly as a standalone project, but eligible as a project component)

Also resource to Communities

[Barre - Montpelier Road \(US 302\) Road Diet Video](#)

[FAQ Page for the Road Diet Project](#)

If you have additional questions about the Road Diet, please email jon.kaplan@state.vt.us

~ Important Links and Information ~

[Guidelines for Pedestrian Crossing Treatments](#) - 2015

[Memo on Detectable Warnings at Driveways](#)

[Davis-Bacon Wage Rates](#)

[Pedestrian & Bicycle Policy Plan](#) - 2008

[Bicycle Commuter's Guide](#) - 2009

[Pedestrian and Bicycle Planning and Design Manual](#) - 2002

[Share the Road Brochure](#)

[Report on Shared-Use Path and Sidewalk Unit Costs](#) - Updated August 2014

[Bicycle Touring and Mountain Biking - VermontVacation.com](#)

[2012 Economic Impact Study of Bicycling and Walking in Vermont](#)

For a video summary of the study, please go to the following [link](#)

[Go Vermont](#)

~ Important link ~

<http://www.fhwa.dot.gov/federal-aidessentials>

Rutland Creek Path



Lamoille Valley Rail Trail





Transportation Alternatives

Established in MAP-21

1. *Construction, planning, and design of on-road and off-road trail facilities for pedestrians, bicyclists, and other nonmotorized forms of transportation, including sidewalks, bicycle infrastructure, pedestrian and bicycle signals, traffic calming techniques, lighting and other safety-related infrastructure, and transportation projects to achieve compliance with the Americans with Disabilities Act of 1990 (42 U.S.C. 12101 et seq.).*
2. *Construction, planning, and design of infrastructure-related projects and systems that will provide safe routes for non-drivers, including children, older adults, and individuals with disabilities to access daily needs.*
3. *Conversion and use of abandoned railroad corridors for trails for pedestrians, bicyclists, or other nonmotorized transportation users.*
4. *Construction of turnouts, overlooks, and viewing areas.*
5. *Community improvement activities, including--*
 1. *inventory, control, or removal of outdoor advertising;*
 2. *historic preservation and rehabilitation of historic transportation facilities;*
 3. *vegetation management practices in transportation rights-of-way to improve roadway safety, prevent against invasive species, and provide erosion control; and*
 4. *archaeological activities relating to impacts from implementation of a transportation project eligible under this title.*
6. *Any environmental mitigation activity, including pollution prevention and pollution abatement activities and mitigation to--*
 1. *address stormwater management, control, and water pollution prevention or abatement related to highway construction or due to highway runoff, including activities described in sections 133(b)(11), 328(a), and 329; or*
 2. *reduce vehicle-caused wildlife mortality or to restore and maintain connectivity among terrestrial or aquatic habitats.*
- 7. *The Safe Routes to School Program under Section 1404 (SAFETEA-LU)*
- *(23 U.S.C. 402 note).*

Grant Committee

19 V.S.A. § 38. Transportation Alternatives Grant Program

§ 38. Transportation Alternatives Grant Program

(a) The Transportation Alternatives Grant Committee is created and shall comprise:

- (1) the Secretary of Transportation or his or her designee;
- (2) a representative from the Division of Historic Preservation appointed by the Secretary of Commerce and Community Development;
- (3) one member appointed by the Secretary of Commerce and Community Development to represent the tourism and marketing industry;
- (4) a representative of the Agency of Natural Resources appointed by the Secretary of Natural Resources;
- (5) three municipal representatives appointed by the governing body of the Vermont League of Cities and Towns;
- (6) one member representing and appointed by the governing board of the Vermont Association of Planning and Development Agencies;
- (7) two members from the House designated by the Speaker; and
- (8) two members from the Senate designated by the Committee on Committees.

(b) Municipal and legislative members of the Transportation Alternatives Grant Committee shall serve concurrently for two-year terms and the initial appointments of these members shall be made in a manner which allows for them to serve a full legislative biennium. In the event a municipal or legislative member ceases to serve on the Committee prior to the full term, the appointing authority shall fill the position for the remainder of the term. The Committee shall, to the greatest extent practicable, encompass a broad geographic representation of Vermont.

(c) The Transportation Alternatives Grant Program is created. The Grant Program shall be administered by the Agency, and shall be funded in the amount provided for in 23 U.S.C. § 213(a), less the funds set aside for the Recreational Trails Program as specified in 23 U.S.C. § 213(f). Awards shall be made to eligible entities as defined under 23 U.S.C. § 213(c)(4), and awards under the Grant Program shall be limited to the activities described at 23 U.S.C. § 213(b) other than Recreational Trails Program grants.

(d) Eligible entities awarded a grant must provide all funds required to match federal funds awarded for a Transportation Alternatives project. All grant awards shall be decided and awarded by the Transportation Alternatives Grant Committee.

(e) Transportation Alternatives grant awards shall be announced annually by the Transportation Alternatives Grant Committee not earlier than December and not later than the following March.

(f) Each year, \$200,000.00 of the Grant Program or such lesser sum if all eligible applications amount to less than \$200,000.00 shall be reserved for municipalities for eligible salt and sand shed projects. Grant awards for eligible projects shall not exceed \$50,000.00 per project. Regarding the balance of Grant Program funds, in evaluating applications for Transportation Alternatives grants, the Transportation Alternatives Grant Committee shall give preferential weighting to projects involving as a primary feature a bicycle or pedestrian facility. The degree of preferential weighting and the circumstantial factors sufficient to overcome the weighting shall be in the complete discretion of the Transportation Alternatives Grant Committee.

(g) The Agency shall develop an outreach and marketing effort designed to provide information to communities with respect to the benefits of participating in the Transportation Alternatives Grant Program. The outreach and marketing activities shall include apprising municipalities of the availability of grants for salt and sand sheds. The outreach effort should be directed to areas of the State historically underserved by this Program. (Added 2003, No. 56, § 74, eff. June 4, 2003; amended 2003, No. 160 (Adj. Sess.), § 29, eff. June 9, 2004; 2005, No. 175 (Adj. Sess.), § 63; 2013, No. 12, § 12.)

Northfield





Municipal Park & Ride

2015 MUNICIPAL PARK-AND-RIDE GRANT DEMONSTRATION PROGRAM

(a) The General Assembly finds that with increased demand for alternative transportation choices, the need to reduce the number of Singular Occupancy Vehicles, SOVs, and to reduce the amount vehicle pollutants dispersed into the air from the vehicular traffic, municipalities may need assistance in funding Park-and-Ride lot projects.

(b) Grants awarded under this section shall be for preliminary engineering, and construction only of Park-and-Ride lots in municipalities. Any Vermont municipality shall be an eligible applicant. The Agency of Transportation shall develop an application for this demonstration program and notify eligible participants of its availability.

(c) The Agency of Transportation shall develop criteria for approval of applications which shall include, but are not limited to:

(1) Land used must currently be owned by Municipality; (Land can be owned by State of Vermont with an 1111 Permit or privately with minimum twenty year lease) Note that grant funds cannot be used for Right-of-Way or lease expenses.

(2) Lot location must be on or near a State Highway;

(3) Lot must be available for commuters use year around;

(4) Lot size must provide parking spaces for greater than 10 vehicles;

(5) Lot must be maintained by municipality;

(6) Eligible activities may be but not limited to gravel surface, paved surface, lighting and/or signing;

(7) Municipality will collaborate with Public Transit providers when an existing or planned transit route is present;

(d) The sum of \$250,000.00 is appropriated from the transportation fund to the agency of transportation for the purposes of this section.

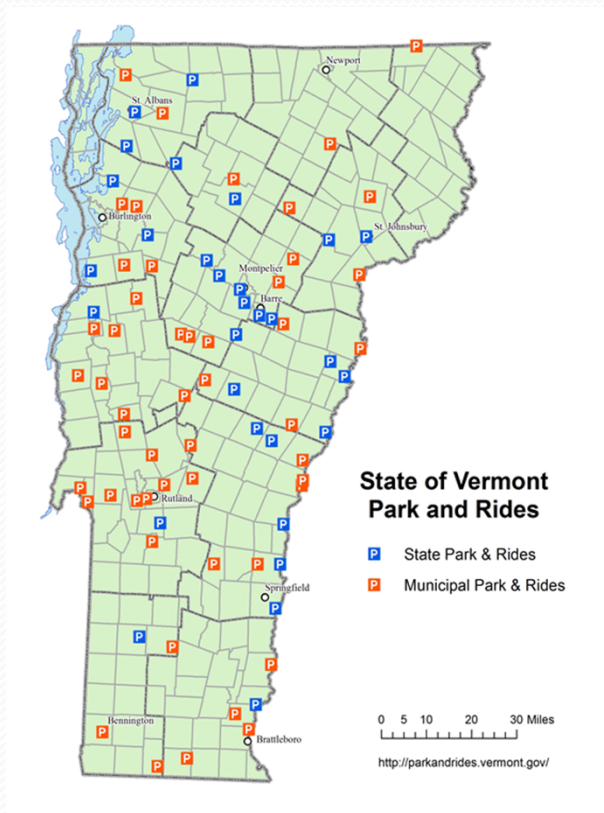
Program started in 2005

To date, \$2.4 million has been available to program which has resulted in over 1200 municipal park & ride spaces being built in 70 facilities. Picture shown below is in Westminster off of Westminster Heights Road near Westminster State Hwy west of 1-91 exit 5



State and Municipal P & R Locations

Overall System



State System

The State of VT has 30 Park-and-Ride Facilities with a total of 1,463 spaces available

New projects continue to be developed. Working to develop a strategic or development plan for future facilities



Municipal Projects in Other Programs

Roadway Program – 25 projects

Safety and Traffic Operations – 3 projects

State Highway Bridge – 1 project

Town Highway Bridge – 1 project

Multi – modal – 1 project

Municipal Mitigation Stormwater Earmark – 7
active projects

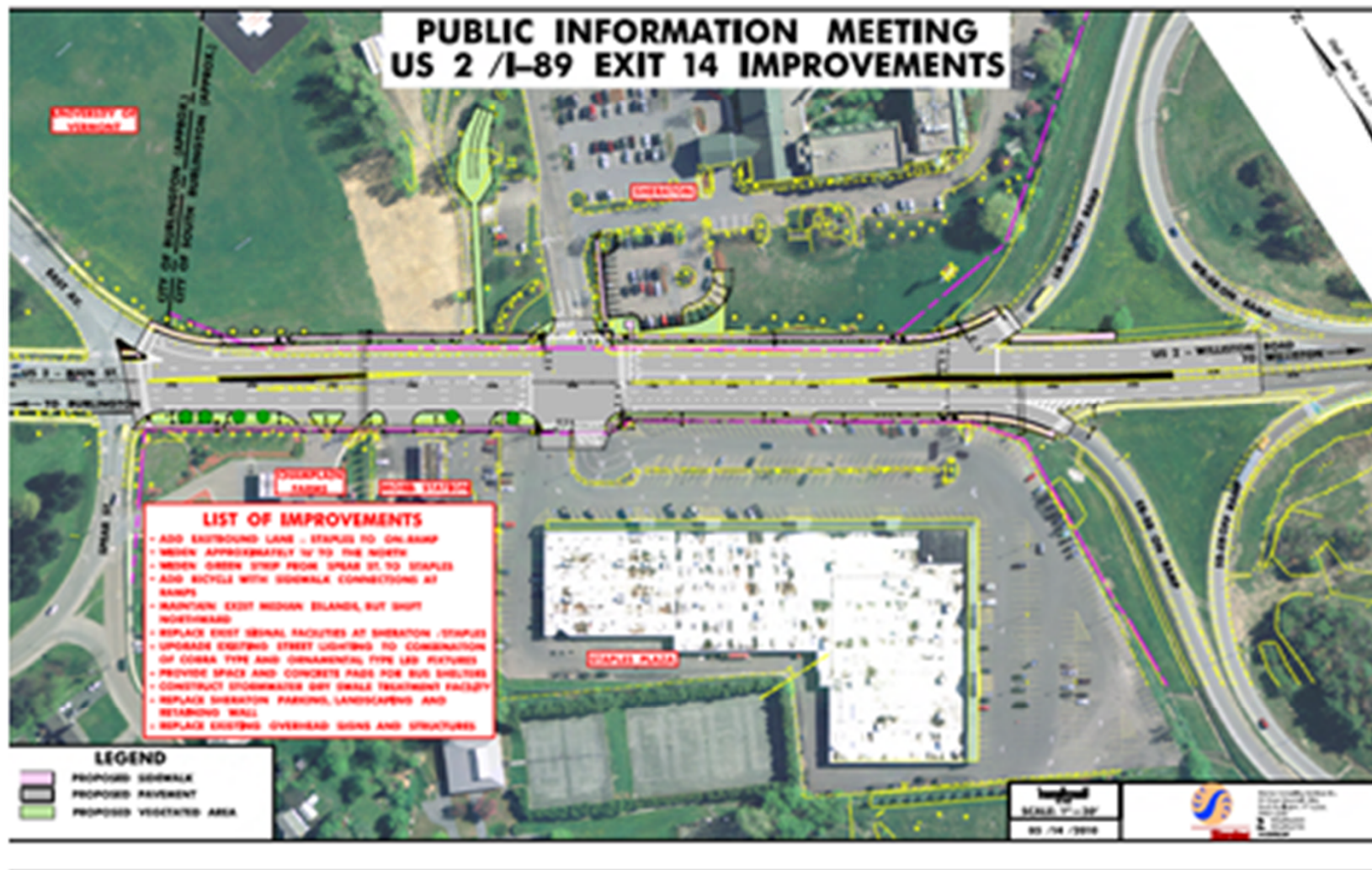
Waterbury Roundabout – Safety and Traffic Operations



Prince Lane – Bristol – Earmark, Roadway Program



South Burlington Widening – Roadway Program





Rest Area Program

Opportunity to use federal funds for preventative maintenance on state-owned facilities in conjunction with BGS

May be used for improvements to a variety of building components including exterior wall systems, exterior doors, windows, roofing, heating systems, cooling systems, mechanical controls, septic tank, leach field, generators, lighting and controls, fire/security alarms, security cameras and equipment, flooring, and walkways and sidewalks